

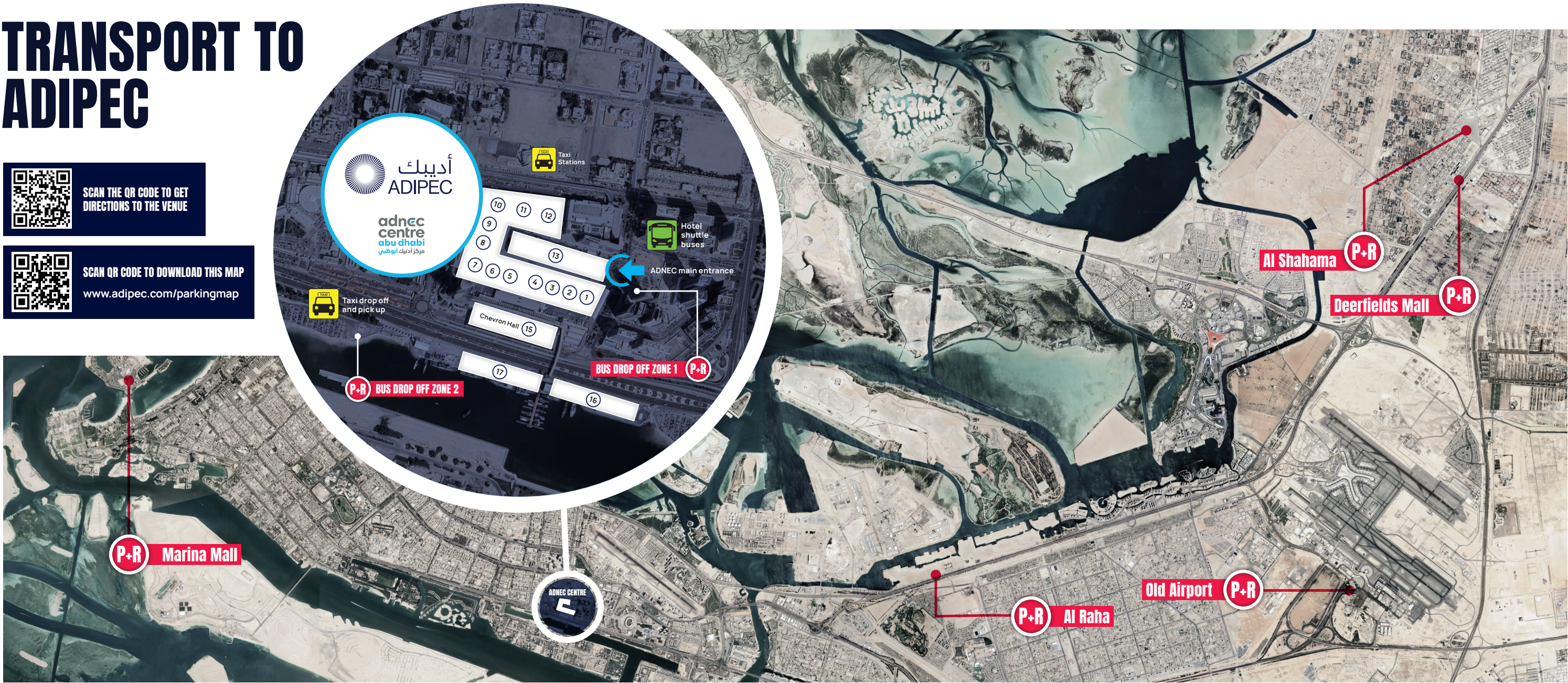
TRANSPORT TO ADIPEC



SCAN THE QR CODE TO GET DIRECTIONS TO THE VENUE



SCAN QR CODE TO DOWNLOAD THIS MAP
www.adipec.com/parkingmap



GETTING TO ADIPEC:

ADIPEC, held at ADNEC, is easily accessible via taxi or shuttle buses from select hotels and Park & Ride locations.

Onsite parking is not available. Exhibitors driving to the event can use the Park & Ride facilities, where shuttles run every 10-15 minutes.

TRAVELLING BY TAXI:

- Book via Abu Dhabi Taxi App or call 600 53 53 53
 - Use Careem App with 'ADNEC' code for 15% off your ride to the venue
- There are two taxi pick-up areas at the ADIPEC venue:
- Marina near Hall 17
 - Opposite Aloft Hotel

HOTEL SHUTTLE BUSES:

Complimentary buses are available from select hotels from around Abu Dhabi city.

3 November 06:00 - 12:00 to ADIPEC and departing from 16:00 - 19:00
4-6 November 08:00 - 12:00 to ADIPEC and departing from 16:00 - 19:00

For more information, visit www.adipec.com/gettingtoADIPEC

DROP OFF / PICK UP LOCATIONS

1 - 17 Exhibition Halls

 Taxi drop off and pick up

 Hotel shuttle buses

 Park & Ride bus drop off Zones

PARK AT THE FOLLOWING LOCATIONS AND TAKE THE SHUTTLE BUSES TO AND FROM THE VENUE:

PARK & RIDE ZONE 1 ROUTE

PICK UP:	DROP-OFF:
■ Al Shahama	Bus drop off Zone 1 ADIPEC Main entrance
■ Deerfields Mall	Bus drop off Zone 1 ADIPEC Main entrance
■ Al Raha Beach	Bus drop off Zone 1 ADIPEC Main entrance

PARK & RIDE TIMINGS

DAY 1: 06:00 - 20:00 (every 10-15 minutes)
DAYS 2 TO 4: 08:00 - 20:00 (every 10-15 minutes)

PARK & RIDE ZONE 2 ROUTE

PICK UP:	DROP-OFF:
■ Marina Mall	Bus drop off Zone 2 near Marina Hall Car Park D
■ Old Airport	Bus drop off Zone 2 near Marina Hall Car Park D

For more information, visit www.adipec.com/gettingtoADIPEC